

Features

Performance (*Optional function)

- Single pump single needle (Click-clack)
- UF/Conductivity profile
- Dialysate filter
- Concentrate nozzle rinse *
- Blood pressure monitor *
- Network connection *
- Blood volume monitor *
- Dialyzer inlet blood pressure *
- Sodium Infuser *

User Friendly Interface

- Treatment settings data can be stored for up to 16 patients, eliminating the need to input data every time
- Large graphic display for easy operation

Safety

- Continuous monitoring of pumps and valves during treatment
- Self test of extracorporeal blood circuit, hydraulic circuit, and CPU system before starting treatment
- Detectors for blood, air bubble, and blood tubing lines

Easy Maintenance

- Flow diagram for checking the function of each part of the hydraulic circuit
- Machine and treatment history data



Specifications

Equipment Specifications

Dimensions	Height: 122 cm Width: 30 cm Depth: 37 cm
Weight	Standard system: Approximately 60 kg System with all options: Approximately 80 kg
Power supply	AC (single-phase) 110, 220 to 240 50/60Hz±1Hz Back-up battery: Ni-MH battery, 24V/500mAh
Water supply	Pressure range of water supply: 70 to 300 kPa Temperature: 10 to 30°C
Dialysate flow rate(Qd)	Setting range: 300 to 700 mL/min
Dialysate temperature	Setting range: 33 to 40°C
Dialysate conductivity	Bicarbonate conductivity: Setting range: 1.5 to 7.0 mS/cm Total conductivity: Setting range: 12.5 to 15.5 mS/cm
Disinfection method	Chemical, heat, or citric acid/heat
UF control system	UF rate setting range: 0 or 0.1 to 4.0L/h Accuracy: ±30mL/h (Qd 300 to 500 mL/min) ±0.1% of Qd (Qd 501 to 700 mL/min)
Blood pump	Flow rate setting range: 40 to 600 mL/min
Air detector	Ultrasonic, Sensitivity (blood flow rate 250 mL/min) normal bubbles: 0.02 mL micro bubbles (blood/air mixture): 0.0003 mL
Blood leak detector	Optical, Sensitivity: 0.5 mL blood/1L dialysate (Blood: Hematocrit 20%, Dialysate temperature: 37°C)

Monitoring Display Specifications (Measurement Range)

Venous pressure	-200 to +500 mmHg
TMP	-100 to +500 mmHg
Dialysate pressure	-600 to +600 mmHg

- The appearance and specifications are subject to change without prior notice.
- The photograph of the exterior view may appear different due to printing quality.
- Read the accompanying operation manual before use.

NIKKISO CO.,LTD.

20-3, Ebisu 4Chome, Shibuya-ku, Tokyo 150-6022, Japan
Phone : +81-3-3443-3727
Telefax : +81-3-3440-0681
<http://www.nikkiso.com>

For information, Call

Catalog No.708R2
2011.10 (CM)

copyright© 2011 NIKKISO Co., LTD. All Right reserved.



27

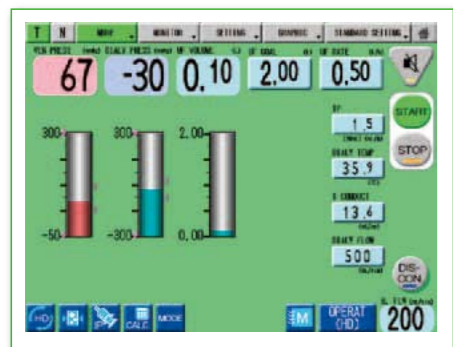
HEMODIALYSIS SYSTEM

DBB-27

Compact and User Friendly Design

The compact design offers comfort to the patient during a treatment.

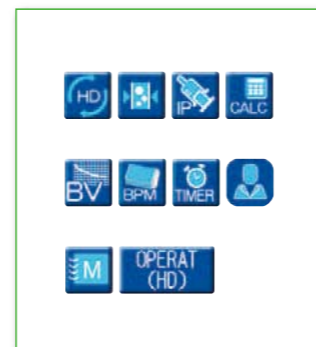
The 12.1-inch color LCD touch screen provides an user friendly interface with useful status icons.



Treatment mode



Message screen

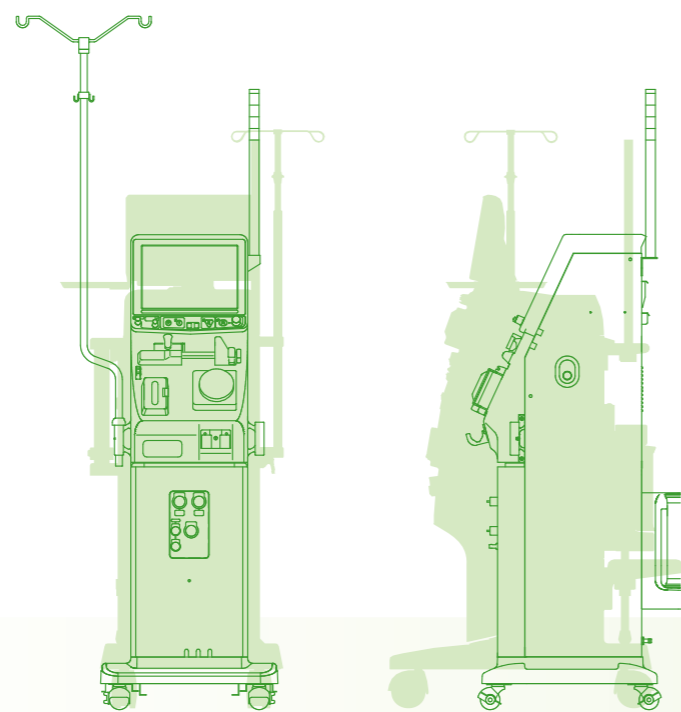


Status icon

Comfort in Treatment

DBB-27 is the most compact of the DBB series.

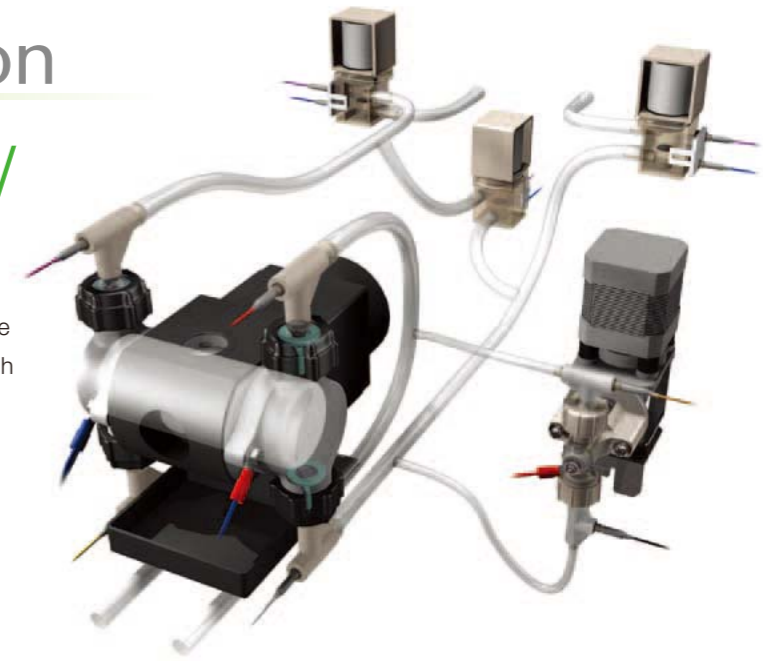
This compact design gives patients comfortable environment, and also promotes effective use of dialysis room space.



Accurate Ultrafiltration

Solenoid valve open/close status monitor

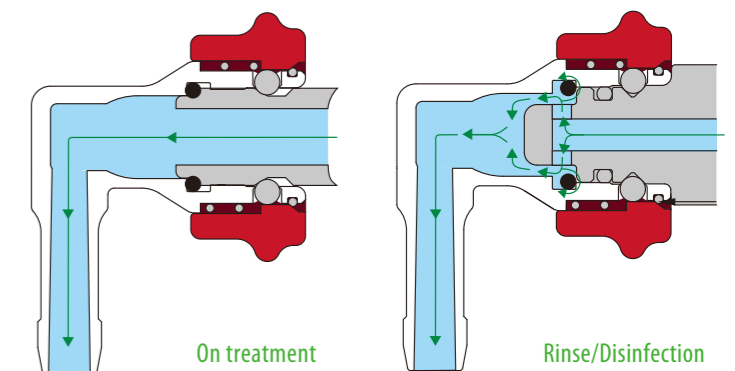
The status of the solenoid valve is monitored using the electric voltage between two electrodes. Together with TMP auto-forecast monitoring and continuous monitoring for discharge precision of pumps, the addition of solenoid valve status monitor achieves ultrafiltration with even greater accuracy.



Purification of dialysate

Clean Coupling

This special design cleans and disinfects the sealed part of the dialyzer coupling, optimizing the cleaning of the dialysate.



Dialysate Filter

The dialysate filter is easily replaceable without contamination. Filter leakage can be detected by performing a leakage test before each treatment.



Concentrate Nozzle Rinse Optional

This optional feature automatically cleans the nozzles for A and B concentrates after each treatment.

